

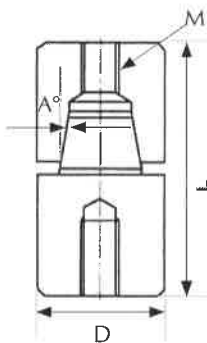
LOCATION RINGS

DIMENSIONS (mm)

CODE	D	T	p	t	d1	d2	d
YCZ5200	100	15	80	7	11	7	35
YCZ5210	110	15	90	7	11	7	35
YCZ5220	120	15	90	7	11	7	35
MAZ6220	120	15	85	9	15	8	35
YCZ5225	125	15	90	7	11	7	35
YCZ5240	150	15	118	7	11	7	35
YCZ5250	101.40	15	80	7	11	7	35

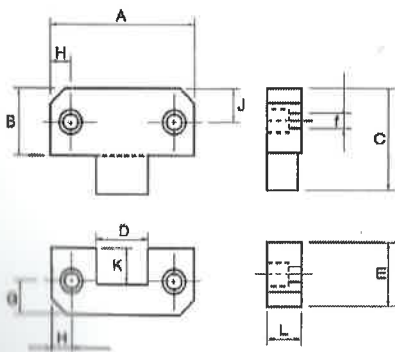
ROUND TAPERLOCK SETS

Hardened and ground and available in European ($\Lambda = 15^\circ$) and Asian standards ($A = 5^\circ$)



CODE	D (mm)	A°	M	L (TOLERANCE)
YCZ6212	12	15°	M4	34, (+.05 -0)mm
YCZ6214	16	5°	M5	30, (+.2 +.4)mm
YCZ6215	16	15°	M5	34, (+.05 -0)mm
YCZ6219	20	5°	M6	40, (+.2 +.4)mm
YCZ6220	20	15°	M8	54, (+.05 -0)mm
YCZ6224	25	5°	M8	50, (+.2 +.4)mm
YCZ6225	25	15°	M8	54, (+.05 -0)mm
YCZ6230	30	15°	M10	72, (+.05 -0)mm
YCZ6232	32	15°	M10	72, (+.05 -0)mm
YCZ6235	42	15°	M10	92, (+.05 -0)mm

Full dimensional information on request



STRAIGHT SIDE LOCK SETS

Sets made from hardened (HRC 56-58) and ground steel.

DIMENSIONS (mm)

CODE	A	B	C	D	E	f	G	H	J	K	L
YCZ7145	38	22	30	12	17	6.5	7	7	11	9	15
YCZ7150	50	21.5	30	17	21.5	6.5	11	8	11	9.5	16
YCZ7155	75	36	50	25	36	10.5	18	12.5	18	15	19
YCZ7160	100	45	65	35	45	10.5	22	15	22	21	19
INDENT	125	45	65	45	45	10.5	22	20.5	22	21	25

TAPER BLOCK SETS

Made from hardened (HRC 56-58) and ground steel.

DIMENSIONS (mm)

CODE	W	L	C	D	E	G	M
INDENT	25	50	17.5	8	-	5	M5
YCZ7210	30	100	22	10	60	5	M6
YCZ7215	40	150	25	13	100	5	M8

